

USING REMOTE DESKTOP PROTOCOL

With the Remote Desktop Protocol (RDP) option, you only need a Remote Desktop Connection Client for your Mac and a stable Internet connection. This tool can be freely downloaded [online](#). It enables you to remotely connect to the EGS server where CALCMENU or F&B Control is installed.

Here, you can work with the program as if it is installed on your own Mac. There is no additional software downloads nor installation required. You only have to subscribe to the EGS Remote Access Service so you can use EGS Solutions on your Mac.

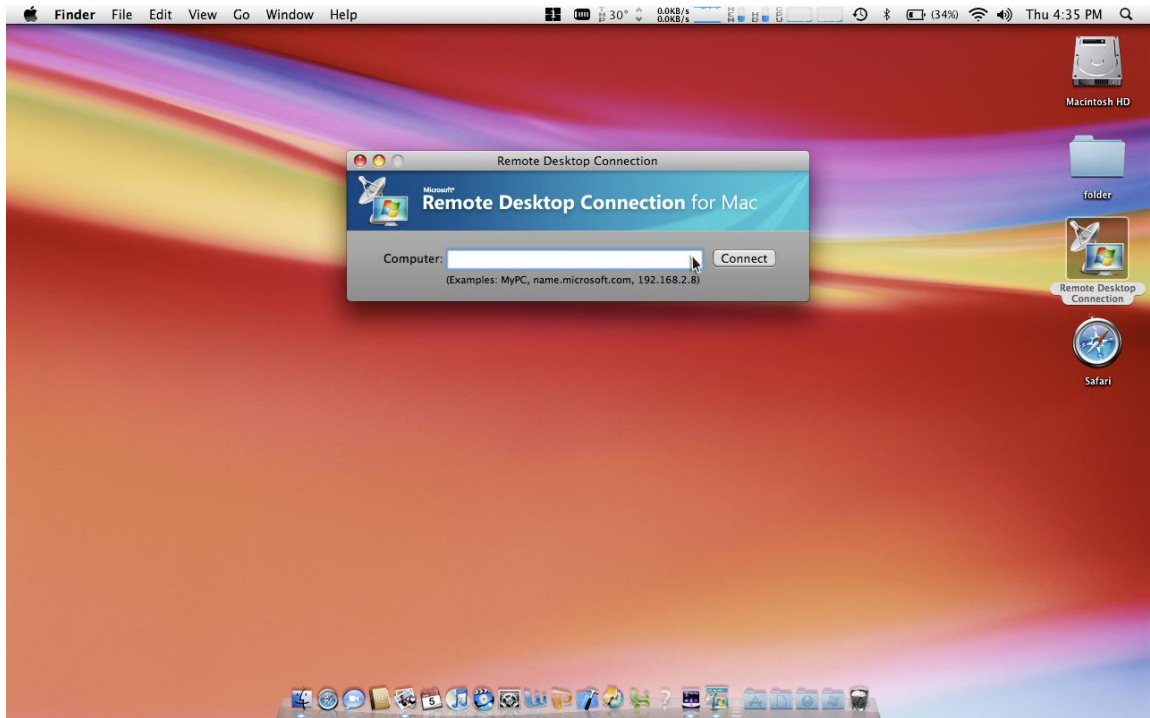
Click [here](#) to access the demo (you will be asked to register if you don't have an account yet). The database in the online demo is for trial purposes only. After the thirty (30) days trial period, the information that you encoded in the database will be removed.

Once you have Remote Desktop Connection on your Mac, do the following to access CALCMENU and/or F&B Control.

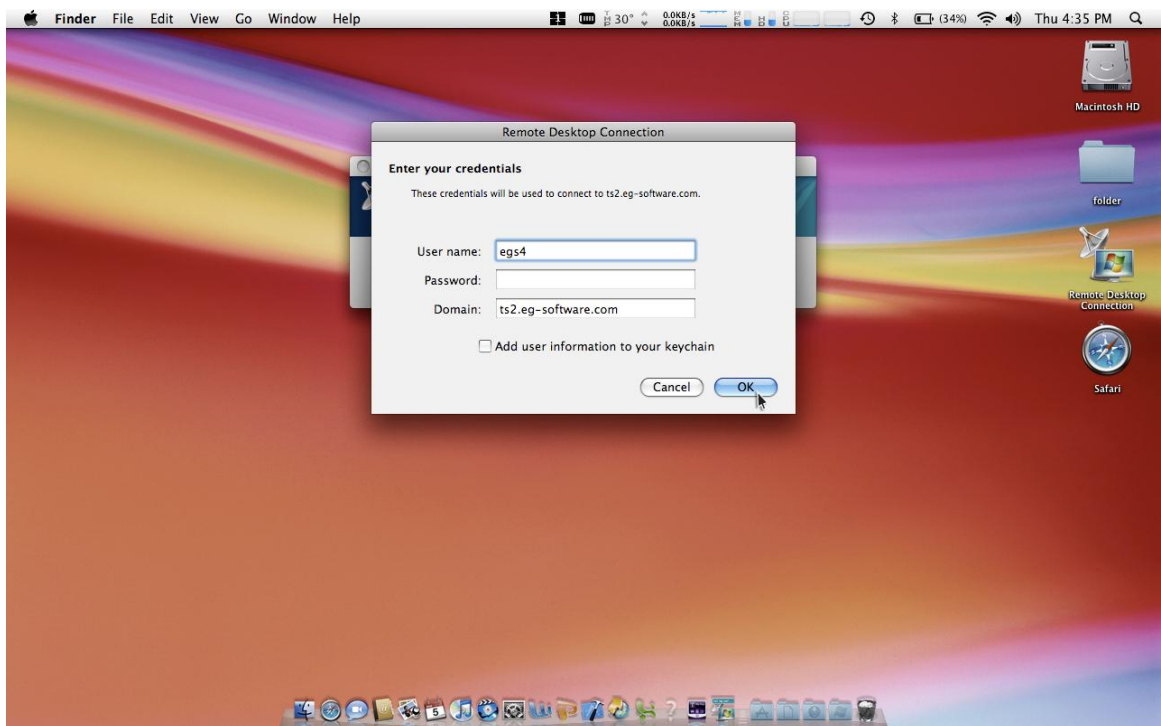
1. Double-click **Remote Desktop Connection**.



2. Type the domain name of the remote server. EGS will provide the domain name.



3. Type the User name and Password. EGS will provide the login details. Click **OK**.





You will be automatically logged in CALCMENU. The CALCMENU window will be displayed.

